



RESIDENCE

27 Cherrytree Place, Strathaven, ML10 6JG

www.residencestateagents.co.uk



Viewing by appointment with Residence Strathaven

T: 01357 572222 | E: strathaven@residencestateagents.co.uk | A: 3 Bridge Street, Strathaven, ML10 6AN



1 Bedrooms | 1 Public Rooms | 1 Bathrooms

****CLOSING DATE FRIDAY 31ST JAN @ 12PM****Situated within a sought-after residential locale and sure to appeal to either a first-time buyer or someone looking to downsize, this very well-presented and modernised main door upper cottage flat comes with its own private and enclosed garden to the rear with decking and artificial lawn.

The accommodation comprises entrance vestibule with staircase to the upper floor reception hallway, lounge with aspects to the rear and media wall with recessed electric fire, modern fitted kitchen that has a range of base and wall mounted storage units with worktop surfaces. The flat has 1 double bedroom with mirror fronted wardrobes and a contemporary designed and styled shower room.

Features of the flat include modern décor with stylish internal doors, gas central heating, double glazing and enclosed gardens to the rear whilst parking is available to the front.

Early viewing of this fine home is highly advised.

Cherrytree Place is a highly desirable residential locale within the market Town of Strathaven. The area offers excellent shopping facilities and sports facilities including swimming baths, bowling clubs, golf courses, public parks and country walks. Strathaven has a typical market town community, a wide variety of shops within the village centre including restaurants, pubs, cafes and a large Sainsbury's. The area is also highly regarded for its schooling and for those commuting.



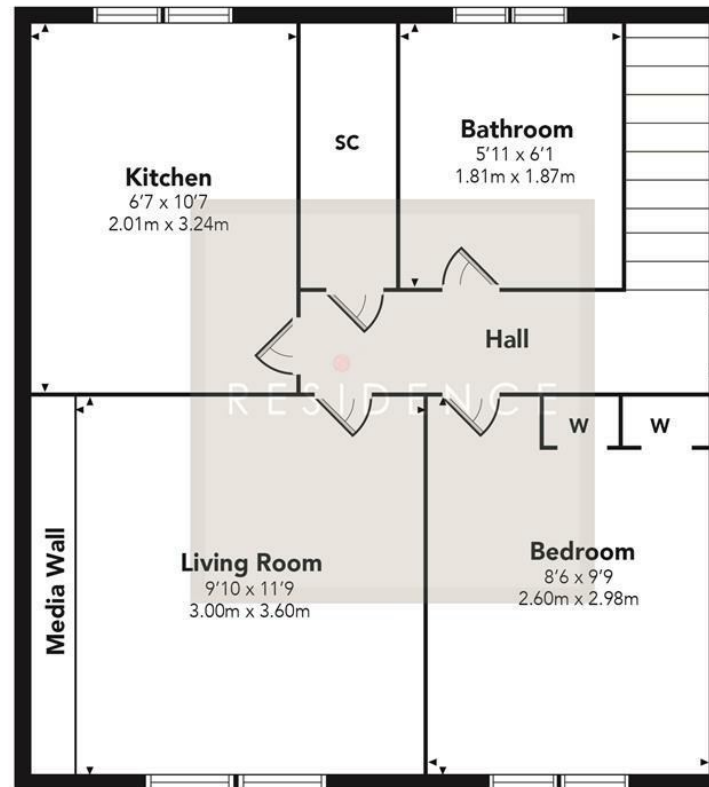
441.32 sq ft | EER = C



RESIDENCE



Cherrytree Place



Floor Plan measurements are approximate and are for illustrative purposes only. While we do not doubt the floor plans accuracy, we make no guarantee, warranty or representation as to the accuracy and completeness of the floor plan. You or your advisors should conduct a careful, independent investigation of the property to determine to your satisfaction as to the suitability of the property for your space requirements.

Produced by Plush Plans Ltd

We believe these details to be accurate; however, they do not form any part of a contract. Fixtures and fittings are not included unless specified in the enclosed. Photographs are for general information and it must not be inferred that any item is included for sale with the property. All distances and measurements are approximate. Floorplans may not be to scale and are for illustration purposes only.