

first for homes

first for property in life - [firstforhomes.co.uk](https://www.firstforhomes.co.uk)

Contact Allan England's Team

01592 752 944



, Kirkcaldy

Price £285,000

Kirkcaldy

IT'S ALL INCLUDED! MANY EXTRAS COME AS STANDARD!
Exceptional Quality Comes Standard!
Buy your dream home with your own choice of interior

LAST ONE REMAINING - VICTORIA PLOT 69 "VICTORIA" STUNNING FAMILY VILLA, 5 BEDS, 3 BATHS, DRIVEWAY

Stunning New Home, 5-Bed Detached Villa Built by Easy Living Developments. Reserve this home and you can enjoy this luxury family villa with quality fittings and an abundance of extras included within the price.

Allan England's team at First for Homes are proud to offer for sale this impressive 5-Bed Detached Villa size approx 128m² located in a highly sought-after area of Castle Gait, East Wemyss, built by Easy Living Developments, a Fife based multi award winning builder you can trust to build your dream home. The immaculate new build provides spacious and luxurious family living accommodation comprising spacious lounge, impressive modern open plan high specification German kitchen (with NEFF integrated appliances) /dining room with focal feature of french doors bringing the outside in, separate utility room, WC/Cloaks, Bedroom 5/ Study completes the ground level. Stairs to the upper level provide 4 generous bedrooms (luxury master en-suite). Built-in wardrobes. Stunning family bathroom. Porcelanosa tiling in all bathrooms. There are gardens to the front and rear. Turf to the front is inclusive, rear garden is top soiled with patio area for that outdoor dining alfresco. Solid wood finishes throughout. Gas Central heating, Solar Panels. Driveway, Many extras are included in the price! It's not to be missed! Approx 0.5 miles from East Wemyss Beach. Excellent transport links. Ideal family home offering a versatile, contemporary home with exceptional finishes.

Call our friendly team for further information on 01592 752944.

• OUR LAST REMAINING "VICTORIA"

* INCENTIVES AVAILABLE. PLOT DEPENDANT. CALL TO DISCUSS
Easy Living Developments, Castle Gait, East Wemyss

* CALL TO VIEW

• Stunning 5 Bedroom Detached Villa

PHOTOGRAPHS ARE FOR ILLUSTRATION PURPOSES ONLY
Impressive Open Plan Kitchen/Dining with Patio Doors

- 5 Spacious Bedrooms 4 With Fitted Wardrobes
- Exceptional Quality & Many Extras Included
- High Quality German Kitchen and NEFF Appliances Included
- Luxury Family Bathroom, WC & Master En-Suite
- Solar Panels & Gas Central Heating
- Reservation Fee Applies





ELD- CASTLE GAIT

DIRECTIONS

LOCATION/AMENITIES – East Wemyss

PHOTOGRAPHS (Illustration Purposes Only)

FLOOR SPACE - 128m²

ENTRANCE VESTIBULE

HALLWAY

LOUNGE 18'8 x 11'10 approx (5.69m x 3.61m approx)

OPEN PLAN KITCHEN/DINING
19'0 x 9'2 approx (5.79m x 2.79m approx)

UTILITY 9'2 x 5'11 approx (2.79m x 1.80m approx)

WC 5'7" x 5'1" (approx) (1.70m x 1.55m (approx))

BEDROOM 5/STUDY (GROUND LEVEL)
9'6 x 8'8 approx (2.90m x 2.64m approx)

REAR VESTIBULE

UPPER LEVEL

BEDROOM 1 (MASTER)
11'11 x 11'10 approx (3.63m x 3.61m approx)

EN-SUITE 8'1 x 4'8 approx (2.46m x 1.42m approx)

BEDROOM 2 13'5 x 9'6 approx (4.09m x 2.90m approx)

BEDROOM 3 12'0 x 10'11 approx (3.66m x 3.33m approx)

BEDROOM 4 11'3 x 5'7 approx (3.43m x 1.70m approx)

FAMILY BATHROOM
7'4 x 7'0 approx (2.24m x 2.13m approx)

GARDEN GROUNDS

WINDOWS & DOORS

DRIVEWAY 3 CARS

INTERNAL FINISHES

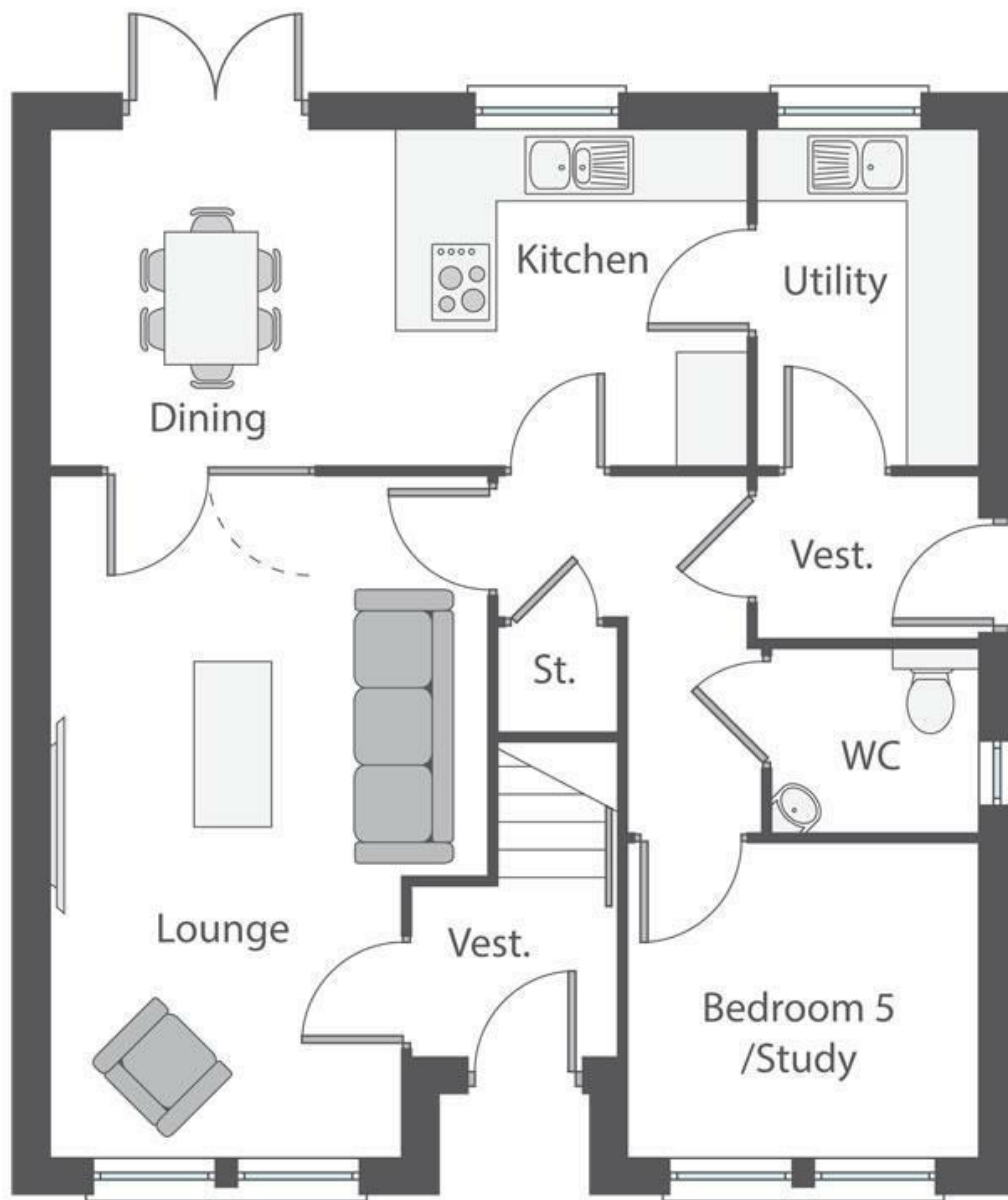
ELECTRICAL/SECURITY

ACOUSTICS, HEATING, LIGHTING & ENERGY

PREMIER GUARANTEE

INFORMATION

REGISTER/RESERVE YOUR PLOT - CALL FIRST FOR HOMES



Information

These particulars are prepared on the basis of information provided by our clients. We have not tested the electrical system or any electrical appliances, nor where applicable, any central heating system. All sizes are recorded by electronic tape measurement to give an indicative, approximate size only. Prospective purchasers should make their own enquiries – no warranty is given or implied. This schedule is not intended to, and does not form any contract.

FREE Valuation

Selling Your Home?

Choose first for homes - a highly experienced estate agency team you can trust to sell your home at the highest possible price. Offering fantastic savings on selling fees, with no compromise on service, free professional photography highlighting your home in its best light, first for homes will be your first choice. Contact us today to arrange your appointment.



first for trust



first for service



first for aftercare

first for homes
first for property in life - firstforhomes.co.uk

Contact Allan England's Team
01592 752 944

32 North Street, Glenrothes, Fife KY7 5NA
Fax: 01592 807947
sales@firstforhomes.co.uk
www.firstforhomes.co.uk