

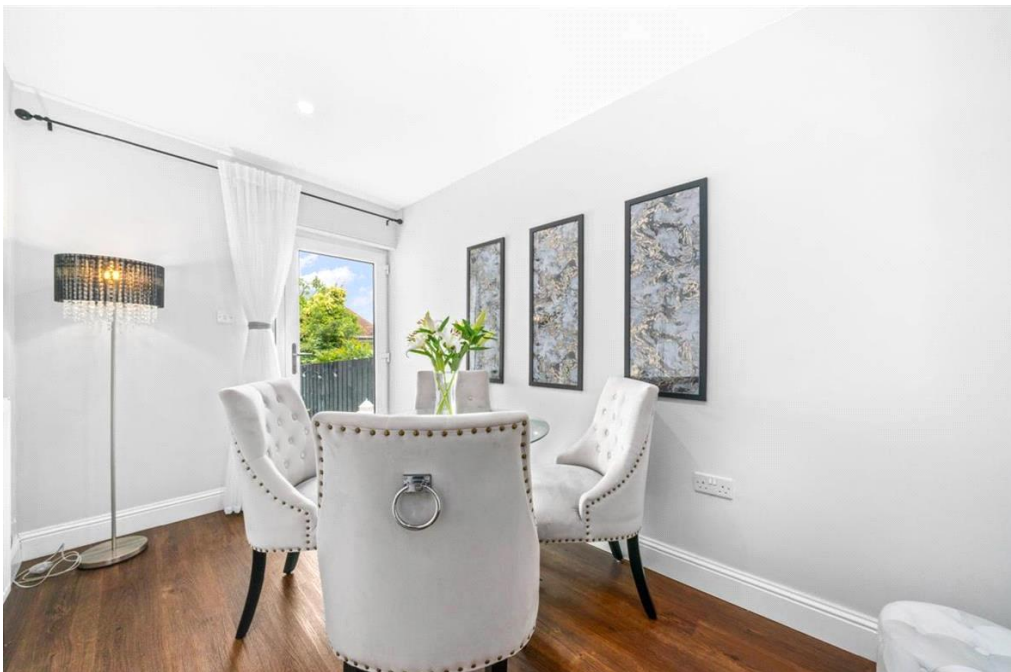
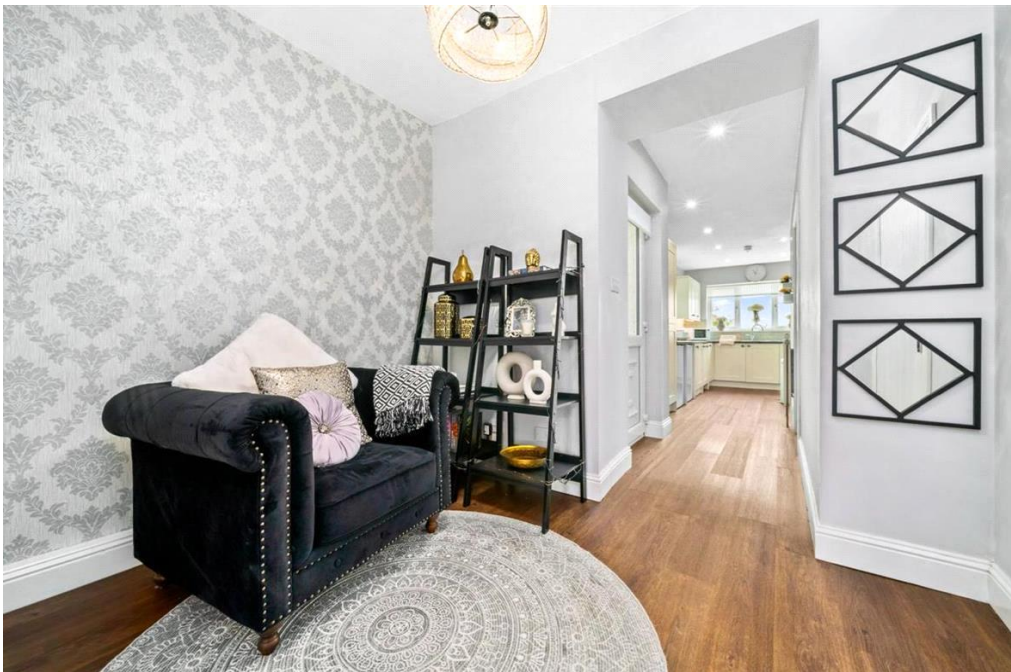


WEIRWOOD AVENUE, GARROWHILL, GLASGOW

A Cleverly Extended 3 Bedroom Terrace Villa With Modern Quality Kitchen, Smart Décor And Flooring Throughout, Downstairs Shower Room And Upstairs Bathroom, Enclosed South Facing Gardens, Viewing Advised.

Offers Over £185,000 Freehold | A Cleverly Extended 3 Bedroom Terrace Villa





A Cleverly Extended 3 Bedroom Terrace Villa With Modern Quality Kitchen, Smart Décor And Flooring Throughout, Downstairs Shower Room And Upstairs Bathroom, Enclosed South Facing Gardens, Viewing Advised.

ENTRANCE HALLWAY

Entrance hallway entered via composite door with double glazed insets, modern quality flooring, carpeted staircase giving access to upper landing. Lounge is entered via timber and glazed door.

LOUNGE

Lounge with walk-in PVC double glazed bay window to front, feature wall, light fresh décor and flooring as per hallway. Access from here is given to inner hallway.

INNER HALLWAY

Which has good size seating area, access from inner hallway is given to kitchen and shower room.

SHOWER ROOM

Shower room has 3 piece suite comprising low flush WC, pedestal wash hand basin, ceramic tiling to splashbacks, walk-in shower with glazed screen, mixer shower installed within, heated towel rail.

KITCHEN

A good size and shape kitchen with a range of floor and wall mounted Shaker style units in a cream finish, ample work surface area, stainless steel sink, side drainer, modern mixer tap, integrated eye level double oven, four-burner ceramic hob, rear facing PVC double glazed window, modern flooring.

DOWNSTAIRS BEDROOM/DINING ROOM

Has modern quality flooring, PVC double glazed French doors leading to rear gardens entered via timber door.

UPPER LANDING

Carpeted staircase leading to upper landing which gives access to two good size bedrooms and family bathroom.

BATHROOM

The family bathroom has a 3 piece suite comprising low flush WC, vanity mounted wash hand basin with storage set underneath, opaque double glazed window, chrome heated towel rail, deep panel bath with shower installed over.

MASTER BEDROOM

The master bedroom faces front and has light fresh décor, feature wall, able to accommodate double bed and other freestanding furniture, PVC double glazed window, access is given to floored and lined attic.

ATTIC

Timber staircase leading to floored and lined attic which has inset Velux windows, modern quality flooring, light décor, power points.



BEDROOM 2

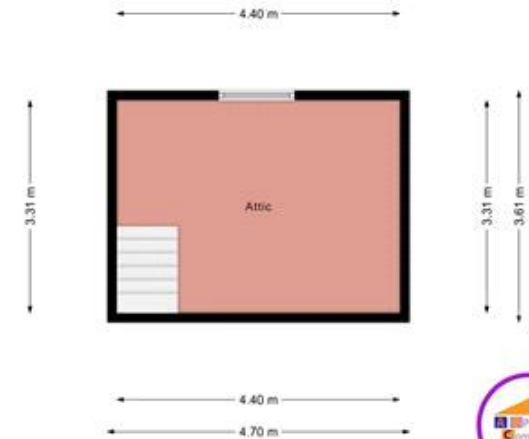
Bedroom 2 is of excellent size, able to accommodate double bed and other freestanding furniture with inbuilt mirror fronted wardrobes, currently used as dressing room/study with quality carpeting and double glazed window.

GARDENS

The property sits within excellent size garden grounds to rear which have been enclosed by timber fencing with patio area and Astro grass benefiting from a south facing sunny direction.

Tenure: Freehold





Viewing by appointment only
 AB Property Consultants & Estate Agents LTD
 211 Glasgow Road, Baillieston, Glasgow G69 6EZ

Tel: 0141 773 4000 Email: sales@abpropertyconsultants.co.uk Website: abpropertyconsultants.co.uk/

Whilst every effort is made to ensure the accuracy of these details, it should be noted that the measurements are approximate only. Floorplans are for representation purposes only and prepared according to the RICS Code of Measuring Practice by our floorplan provider. Therefore, the layout of doors, windows and rooms are approximate and should be regarded as such by any prospective purchaser. Any internal photographs are intended as a guide only and it should not be assumed that any of the furniture/fittings are included in any sale. Where shown, details of lease, ground rent and service charge are provided by the vendor and their accuracy cannot be guaranteed, as the information may not have been verified and further checks should be made either through your solicitor/conveyance. Where appliances, including central heating, are mentioned, it cannot be assumed that they are in working order, as they have not been tested. Please also note that wiring, plumbing and drains have not been checked.