

first for homes

first for property in life - [firstforhomes.co.uk](https://www.firstforhomes.co.uk)

Contact Allan England's Team

01592 752 944



Fleming Drive, Kirkcaldy

Offers over £159,995

Fleming Drive, Kirkcaldy

Beautifully Presented 2-Bed Terraced Villa With 2-Car Driveway Situated In The Desirable Area of Kirkcaldy, Fife!

Allan England's award winning team at first for homes are proud to welcome to the market this Beautifully Presented 2-Bedroom Terraced Villa situated within a desirable area of Kirkcaldy, Fife . The property offers bright and spacious living accommodation throughout, the ground floor comprising: entrance hall, lounge, kitchen/diner with double patio doors leading to the rear gardens, wc/ cloaks, the upper level comprises 2 generous bedrooms, 1 with built in double wardrobe and walk-in cupboard, family shower room. Externally, there are gardens to the rear and benefits from a 2 car driveway to the front with 1 additional allocated parking bays. Boiler installed October 2021. Early viewing is highly recommended to ensure you don't miss out!

HOME REPORT VALUE - £163,000

EPC RATING- C

COUNCIL TAX BAND - C

Call first for homes - first for trust... first for service... first for aftercare!

The popular coastal Town of Kirkcaldy has a wide range of services including shopping, banking, schools and a host of recreational facilities such as the stunning Beveridge Park and the Adam Smith Theatre. For the commuter Kirkcaldy boasts a mainline train station and the A92 road link giving access to Edinburgh and all major local towns.

- Beautifully Presented 2-Bed Terraced Villa
- Situated in Kirkcaldy, Fife!
- Spacious Lounge
- Lovely Kitchen/Diner with Patio Doors
- Landscaped Rear Garden Grounds
- 2 Car Driveway to Front & 1 Additional Parking Bay
- Viewing Essential
- HOME REPORT - £163,000
- COUNCIL TAX - C
- EPC - C





SITUATION - Kirkcaldy

ENTRANCE HALLWAY

LOUNGE 14'5" x 11'7" approx (4.40m x 3.54m approx)

KITCHEN/DINER

14'11" x 8'10" approx (4.56m x 2.71m approx)

WC/CLOAKS

STAIRS TO UPPER LEVEL

BEDROOM 1

11'7" x 8'9" approx (3.55m x 2.67m approx)

BEDROOM 2

9'10" (3.86m x 2.56m approx)

SHOWER ROOM

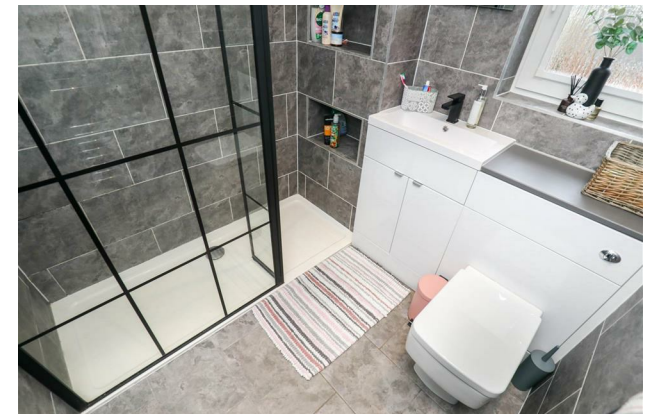
6'5" x 6'4" approx (1.96m x 1.94m approx)

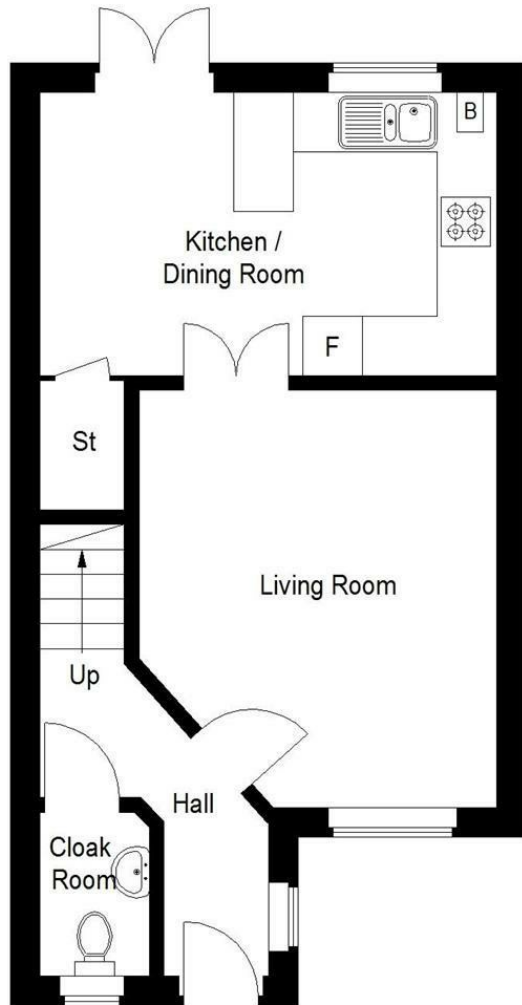
2 CAR DRIVEWAY

1 ALLOCATED PARKING SPACE

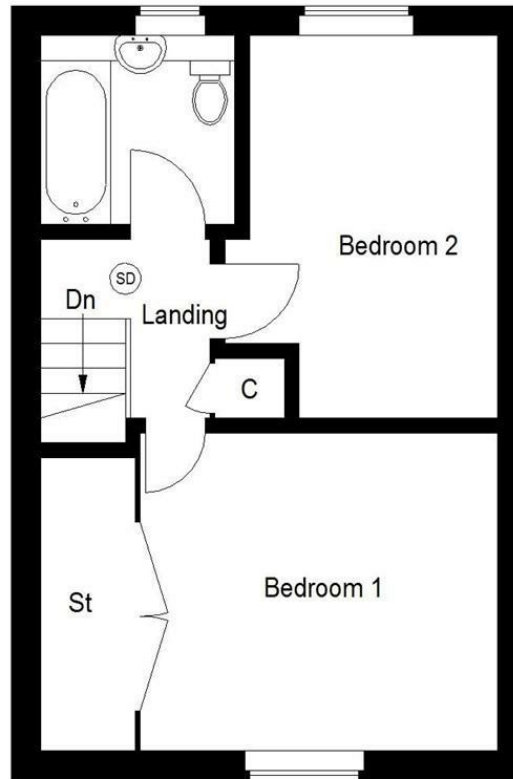
REAR LANDSCAPED GARDEN GROUNDS

INFORMATION





Ground Floor



First Floor

Information

These particulars are prepared on the basis of information provided by our clients. We have not tested the electrical system or any electrical appliances, nor where applicable, any central heating system. All sizes are recorded by electronic tape measurement to give an indicative, approximate size only. Prospective purchasers should make their own enquiries – no warranty is given or implied. This schedule is not intended to, and does not form any contract.

FREE Valuation

Selling Your Home?

Choose first for homes - a highly experienced estate agency team you can trust to sell your home at the highest possible price. Offering fantastic savings on selling fees, with no compromise on service, free professional photography highlighting your home in its best light, first for homes will be your first choice. Contact us today to arrange your appointment.



first for trust



first for service



first for aftercare

first for homes

first for property in life - firstforhomes.co.uk

Contact Allan England's Team

01592 752 944

32 North Street, Glenrothes, Fife KY7 5NA

Fax: 01592 807947

sales@firstforhomes.co.uk

www.firstforhomes.co.uk