

first for homes

first for property in life - [firstforhomes.co.uk](https://www.firstforhomes.co.uk)

Contact Allan England's Team

01592 752 944



South Street West, Leslie

Offers over £269,995

South Street West, Leslie

Bright & Spacious 5-Bedroom Detached Villa With Garage!

Allan England's award winning team at first for homes are proud to welcome to the market this fantastic 5-bedroom Detached Family Villa situated within the Village of Leslie. The property boasts versatile family living accommodation comprising on the ground floor level: entrance vestibule, entrance hall, lounge, dining room, spacious utility room, kitchen, 2 bedrooms and cloaks/WC. The upper level offers 3 further bedrooms and family bathroom. Carpeted stairs rise to 2 additional attic rooms. Built-in storage cupboard. Externally, there are garden grounds to the front, side and rear. Ample space to the side to create a spacious driveway. Generous garage with workshop space. Early viewing is essential to ensure you don't miss out on this fantastic family home!

HOME REPORT VALUE- £285,000

EPC RATING - E

COUNCIL TAX BAND - D

Call first for homes - first for trust... first for service... first for aftercare!

SITUATION - Leslie provides a range of local amenities including shops, restaurants and Primary School. Leslie is adjacent to Glenrothes which is regarded as one of the most successful Towns in Scotland with a wealth of local amenities including Kingdom Shopping Centre as well as sport and leisure at Michael Woods. Glenrothes boasts its very own 18-hole Golf course and both Primary and Secondary schooling are available. For the commuter the A92 allows swift access to Edinburgh and there are railway stations at both Thornton and Markinch.

- Versatile Detached Family Villa!
- 5 Bedrooms & 2 Attic Rooms
- Gardens Front, Side & Rear With Space For Driveway To Side
- Desirable Village Of Leslie
- Generous Garage With Workshop
- Fantastic Potential
- Early Viewing Essential
- HOME REPORT VALUE - £285,000
- EPC RATING - E
- COUNCIL TAX BAND - D





SITUATION - Leslie

ENTRANCE PORCH

ENTRANCE HALLWAY

MAIN LOUNGE (Currently The Games Room)

17'9" x 16'4" approx. (5.43m x 4.98m approx.)

DINING ROOM

14'11" x 14'0" approx. (4.57m x 4.28m approx.)

SPACIOUS UTILITY ROOM

17'11" x 15'7" approx. (5.47m x 4.75m approx.)

KITCHEN

10'0" x 9'3" approx. (3.05m x 2.84m approx.)

BEDROOM 4

14'0" x 11'7" approx. (4.28m x 3.55m approx.)

BEDROOM 5

11'7" x 10'0" approx. (3.54m x 3.07m approx.)

CLOAKS / WC

UPPER LEVEL

BEDROOM 1

14'11" x 13'11" approx. (4.56m x 4.26m approx.)

BEDROOM 2

14'0" x 11'6" approx. (4.27m x 3.53m approx.)

BEDROOM 3

12'3" x 10'0" approx. (3.74m x 3.07m approx.)

FAMILY BATHROOM

10'0" x 9'2" approx. (3.06m x 2.81m approx.)

STAIRS TO 2 ATTIC ROOMS

REAR ATTIC ROOM

11'11" x 8'7" approx. (3.65m x 2.62m approx.)

FRONT ATTIC ROOM

11'11" x 7'3" approx. (3.64m x 2.23m approx.)

STORAGE CUPBOARD

GARDEN GROUNDS FRONT, SIDE AND REAR

SPACIOUS GARAGE WITH WORKSHOP

29'0" x 9'5" approx. (8.84m x 2.88m approx.)

INFORMATION

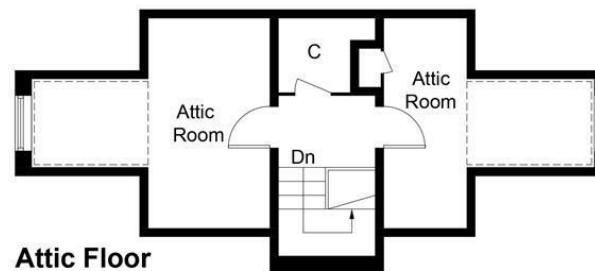
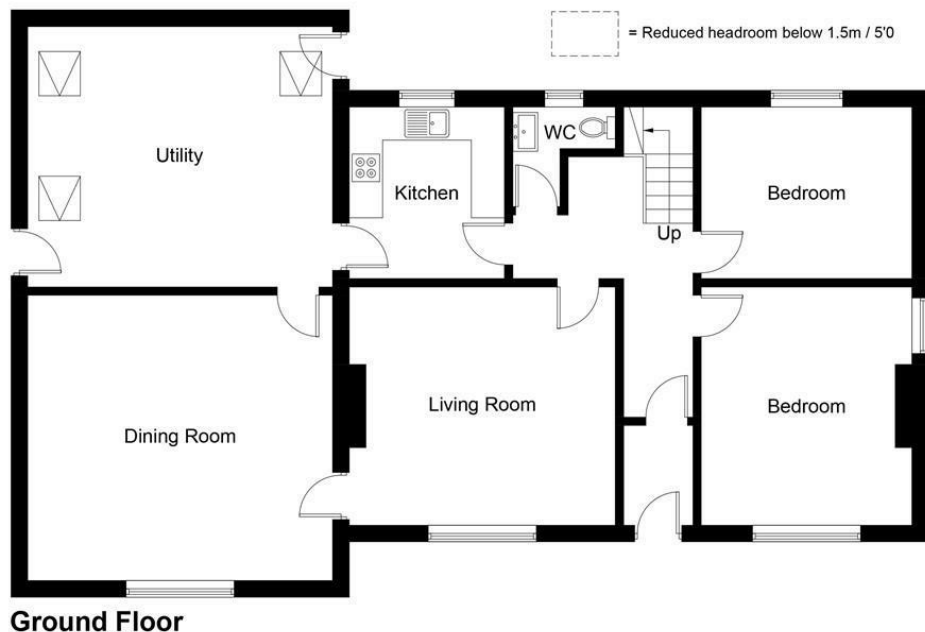


Illustration for identification purposes only, measurements are approximate, not to scale. floorplansUsketch.com © (ID1074340)

Information

These particulars are prepared on the basis of information provided by our clients. We have not tested the electrical system or any electrical appliances, nor where applicable, any central heating system. All sizes are recorded by electronic tape measurement to give an indicative, approximate size only. Prospective purchasers should make their own enquiries – no warranty is given or implied. This schedule is not intended to, and does not form any contract.

FREE Valuation

Selling Your Home?

Choose first for homes - a highly experienced estate agency team you can trust to sell your home at the highest possible price. Offering fantastic savings on selling fees, with no compromise on service, free professional photography highlighting your home in its best light, first for homes will be your first choice. Contact us today to arrange your appointment.



first for trust



first for service



first for aftercare

first for homes
first for property in life - firstforhomes.co.uk

Contact Allan England's Team
01592 752 944

32 North Street, Glenrothes, Fife KY7 5NA
Fax: 01592 807947
sales@firstforhomes.co.uk
www.firstforhomes.co.uk