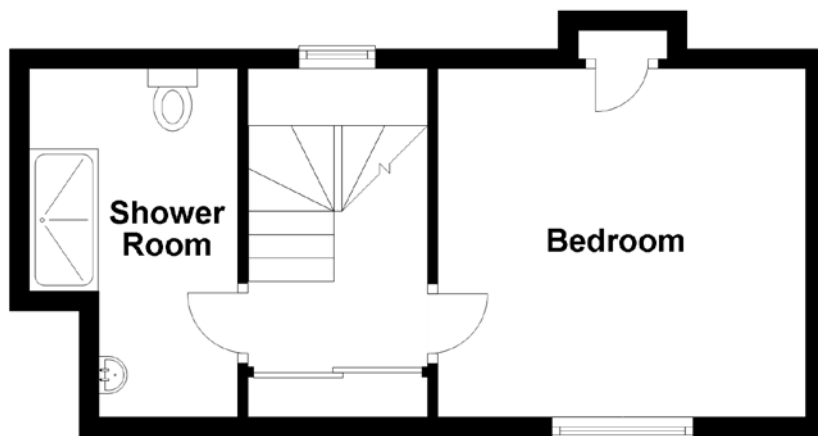
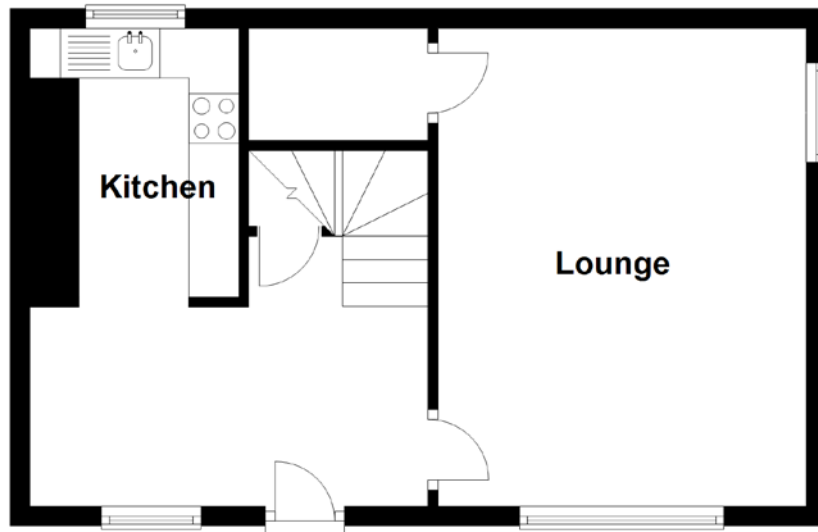


FLOOR PLAN, DIMENSIONS & MAP



Approximate Dimensions
(Taken from the widest point)

Lounge
Kitchen

4.80m (15'9") x 3.70m (12'2")
2.70m (8'10") x 2.10m (6'11")

Bedroom
Shower Room

Gross internal floor area (m²): 66m²
EPC Rating: G

3.70m (12'2") x 3.50m (11'6")

