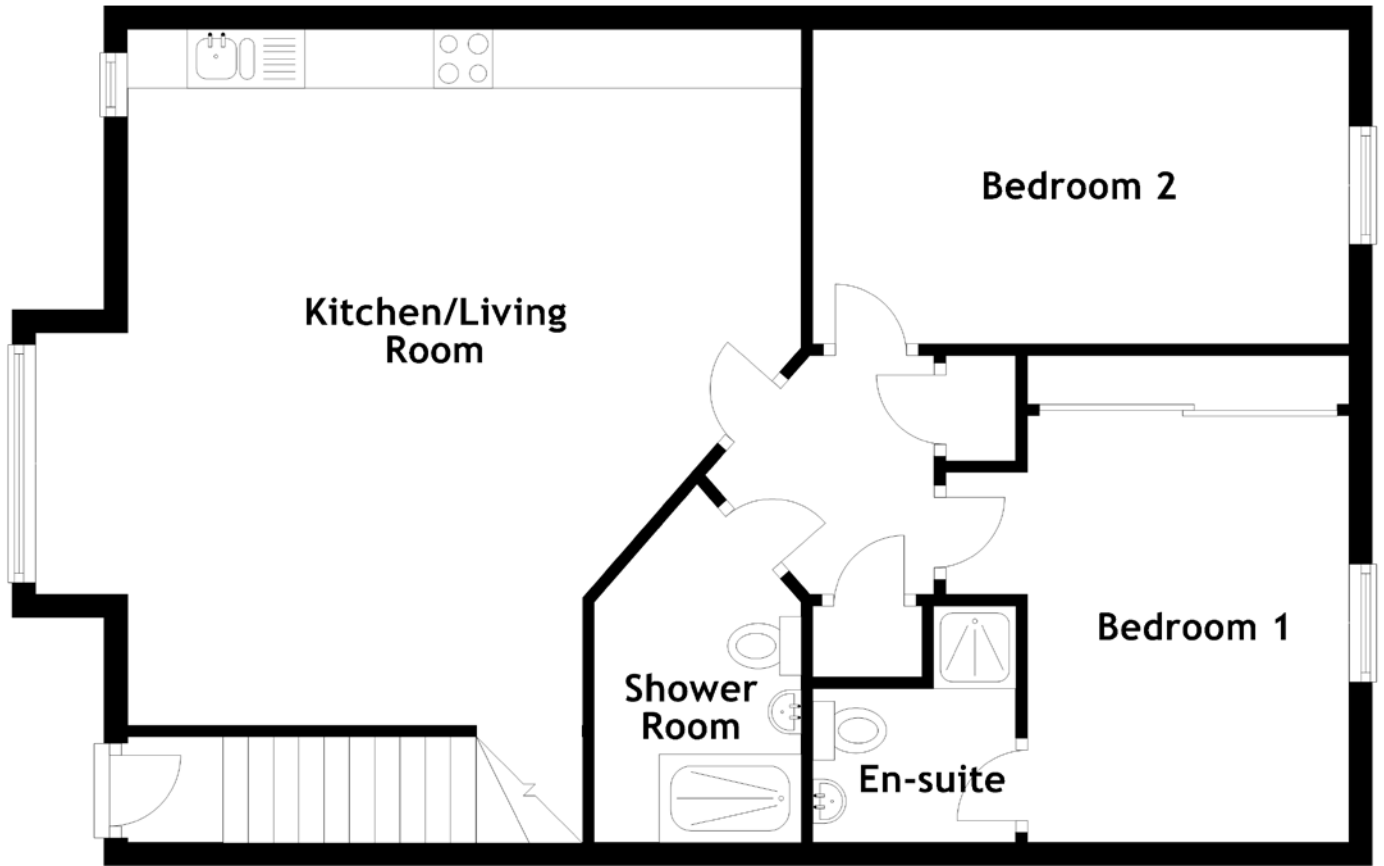


FLOOR PLAN, DIMENSIONS & MAP



Approximate Dimensions (Taken from the widest point)

Kitchen/Living Room 5.91m (19'5") x 5.73m (18'10")
 Bedroom 1 3.62m (11'11") x 3.43m (11'3")
 En-suite 2.01m (6'7") x 1.73m (5'8")

Bedroom 2 4.56m (15') x 2.67m (8'9")
 Shower Room 2.92m (9'7") x 1.71m (5'7")

Gross internal floor area (m²): 74m²
 EPC Rating: C

