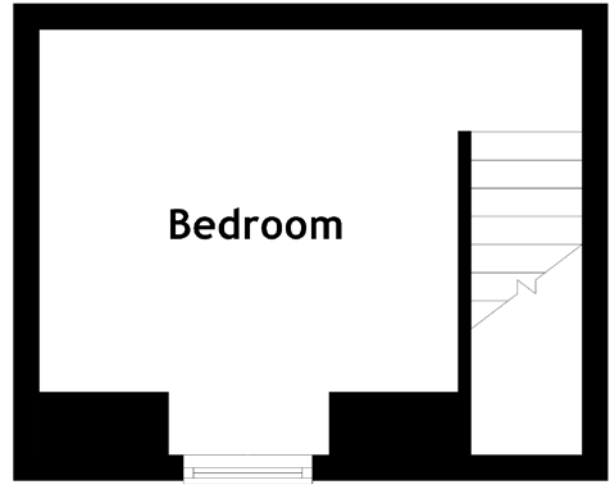
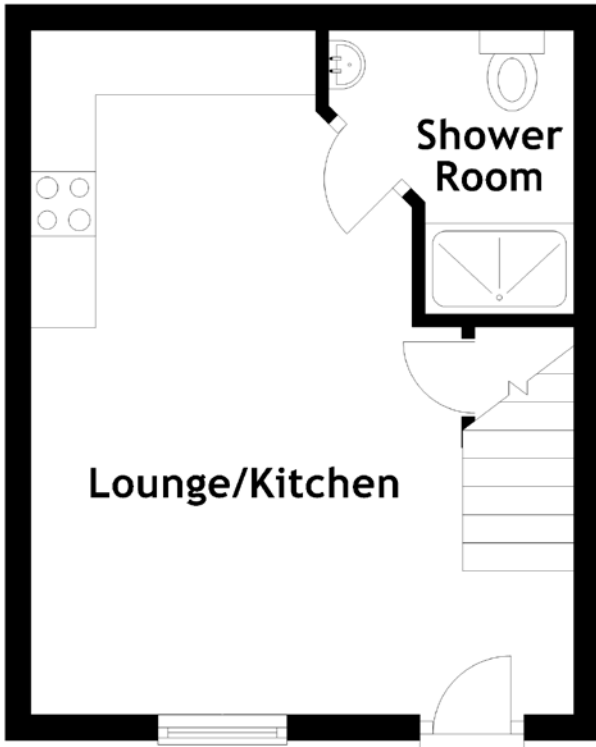


# FLOOR PLAN, DIMENSIONS & MAP



Approximate Dimensions (Taken from the widest point)

Lounge/Kitchen 5.30m (17'5") x 3.33m (10'11")  
Shower Room 2.20m (7'3") x 1.90m (6'3")  
Bedroom 4.20m (13'9") x 3.30m (10'10")

Gross internal floor area (m<sup>2</sup>): 36m<sup>2</sup>  
EPC Rating: D

